



Riu Riu Chiu

(Anon. 1556, Loosely adpt. by Wayne Richmond
from arrs. by Winsome Evans & Linda Spevacek)

Silent Night (Franz Gruber -
Arr. Wayne Richmond, freely using elements
from an arrangement by Winsome Evans.)

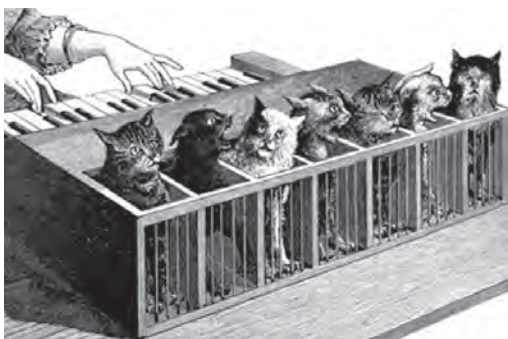
Silent Night, Holy Night
Son of God, love's pure light.
Radiant beams from Thy holy face.
With the dawn of redeeming grace.
Jesus, Lord, at Thy birth,
Jesus, Lord, at Thy birth.

Loosely Woven

Robin Cant# violin, vocals
Sarah Comans vocals
Kristy Dickson vocals
Noni Dickson harp, vocals, drums, percussion
Judie Eddington vocals, percussion
Eric Eisler drums, violin, guitar, bazuki, vocals
Sandra Hava vocals
Lynette Johnson vocals, melodica
Gial Leslie melodica, vocals
John Macrae clarinets, saxophones, recorder, vocals



In memory of
Max Sell
(1929-2011)
& Bae Sell
(1932-2012)



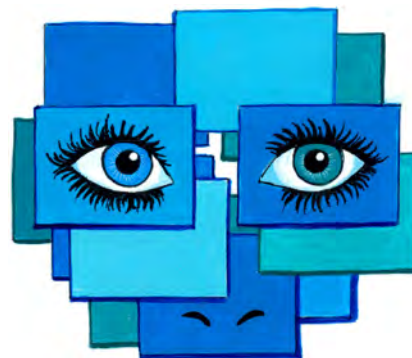
Kazu Milne# violin, vocals
Rima Muir vocals, percussion
Samantha O'Brien flute, sax, vocals, percussion
Wayne Richmond k/bd, concertina, vocals
Ellen Stead* vocals
Frank Stead* vocals
Greg Thompson guitar, vocals
Meredith Williams flute, vocals

Kazu replaces Robin on 6th December
* Not at Humph Hall or Avalon

To be put on the Loosely Woven/Humph Hall email list or for information, contact
Wayne: (02) 9939 8802 wayne@humphhall.org

See music, photos etc. on the Loosely Woven web site at: looselywoven.org

Bright Eyes



Eastwood Uniting Church
7pm Friday 20th November 2015

St Davids Uniting Church, DY
2pm Sunday 22nd November 2015

St Andrews Uniting Church
7pm Friday 27th November 2015

The Lakes Catholic Parish Hall
3pm Saturday 28th November 2015

Humph Hall, Allambie Heights
7pm, Fri 4th + 2pm, Sun 6th Dec 2015

Avalon Baptist Peace Church
4pm Sunday 13th December 2015



Ancient City (M: Andrew de Teliga
-Adp. from an arr. by Paul Jarman & Mark O'Leary, '15)

Orinoco Flow (M: Enya W: Roma Ryan
-Arr. Samantha O'Brien, '15 based on Kirby Shaw arr.)

You're my world (W: Gino Paoli M: Umberto Bindi Trans: Carl Sigman - arr. Wayne Richmond '15)

You're my world, you are my night, and day.
You're my world, you're every prayer I pray.
If our love, ceases to be,
Then it's the end of the world for me.

I'm gonna sing (Traditional Spiritual)

He's a rebel (Gene Pitney - Arr. Wayne Richmond, 2015)



Rorate (Trad. Scottish - Adapted from a Winsome Evans arrangement by Wayne Richmond, 2015)

Green among the gold (Rosalind & Steve Barnes - Arr. Samantha O'Brien, 2015)

And so beneath the Southern Cross, they sang their songs of Ireland.
They sent her sons and daughters here in hungry days of old.
They play their jigs and reels beneath the skies of their new homeland.
Irish hands have woven strands of green among the gold.

The Virgin Mary (Traditional carol - Arr. Vincent)

Women of our time (Judy Small)

Bring them home (Graham Moore)

We will bring them home, we will bring them home,
From the claws of the mighty, with their hearts of stone.
We will bring them home, we will bring them home,
We'll reach out across the ocean, and we'll bring them home.



The Tolpuddle Martyrs

--- Interval ---



Shosholoz (Trad. Sth African work song
- Adapted from various arr. by Jill Stubington, 2015)

Evening Rise (Native American Song
- Arr. Christian Bollmann)

Refuge to a Refugee (Bernard Carney - Arr. Wayne Richmond, 2015)

And I fly no flag of Jesus, speak no politician's creed.
But I sing the song of human beings, crying out in need.
And I'll sing it ever louder, 'til all the wounds are healed.

'Til they know our hearts are open, even though their lips are sealed.
For we are the lucky country, we have hearts enough to care.
We can speak our minds in freedom, we have boundless plains to share.
And we've always known compassion, and rejoiced in being free.

But we can't give refuge, to a refugee
Why can't we give refuge, to a refugee.

Bright Eyes (Mike Batt - Arr. Noni Dickson, '15)

Bright eyes, burning like fire.
Bright eyes, how can you close and fail.
How can the light that burned so brightly,
Suddenly burn so pale,
Bright eyes.

Mercy (Stephen Booker & Aimee Duffy
- Arr. Samantha O'Brien, 2015)

Better be home soon (Neil Finn)

And I know I'm right, for the first time in my life.
That's why I tell you, better be home soon.

Handbell Extravaganza (Arr. Wayne Richmond, 2015)

